



GOTEC

// DRIVE WELL
WITH US!

25 YEARS
EXPERIENCE

A photograph of a woman wearing sunglasses and smiling while driving a car. The view is from the passenger side, showing the steering wheel, dashboard, and the driver's face in the rearview mirror. A bright, warm light flare is visible in the upper right corner. A semi-transparent blue geometric shape is overlaid on the lower left, containing white text.

// WE ARE INSIDE OF
MILLIONS OF CARS



// CONTENT

02	CONTENT
04	INTRODUCTION
06	LEADERSHIP
08	VALUE CHAIN
10	BUSINESS UNIT METAL
12	BUSINESS UNIT PLASTICS
14	BUSINESS UNIT COATING
16	FACTS & LOCATIONS
18	5 VALUES
20	REFERENCES
22	ENVIRONMENT & ENGAGEMENT

A photograph of two men, Lars and Jörg Gorschlüter, standing in front of a modern building with a prominent staircase. They are both wearing light blue button-down shirts with the GOTEC logo on the chest. The man on the left is smiling broadly, and the man on the right is also smiling and wearing glasses. A large blue arrow-shaped graphic points to the right, containing the text.

// FAMILY OWNED BUSINESS WITH **PASSION** FOR AUTOMOTIVE

Lars Gorschlüter CEO • Jörg Gorschlüter COO / GOTEC-GROUP



With more than 25 years of experience in the automotive sector, the GOTECH Group is a reliable partner for the international automotive industry. We are the world's leading specialist for coating with rubber-to-metal and rubber-to-plastic bonding agents. To ensure an optimized supply chain for our customers we manufacture both, the metal and plastic parts to be coated. Globally standardized processes and continuously improved quality management ensure consistently high product quality – that is our promise.

// MARKET LEADER AND PARTNER OF THE INTERNATIONAL AUTOMOTIVE INDUSTRY

The GOTECH Group is the world's leading specialist for coating with rubber-metal bonding agents and for surface finishing of complete assemblies, tube sections, deep-drawn, stamped-bent and plastic parts as well as aluminium tubes and sleeves.

EXHAUST SYSTEMS

- exhaust mounts
- absorber masses

AXLES

- drive shaft mounts
- isolators
- absorber masses
- stabilizer mounts
- air springs

POWER TRAINS

- center bearing support
- propshaft dampers
- rear differential unit dampers

AXLES

- chassis mounts
- sub-frame bushes
- MCU top mounts
- axle boots

PLASTICS PARTS

- components for locking systems
- visible parts made from plastic

STEERING TRAINS

- absorber masses

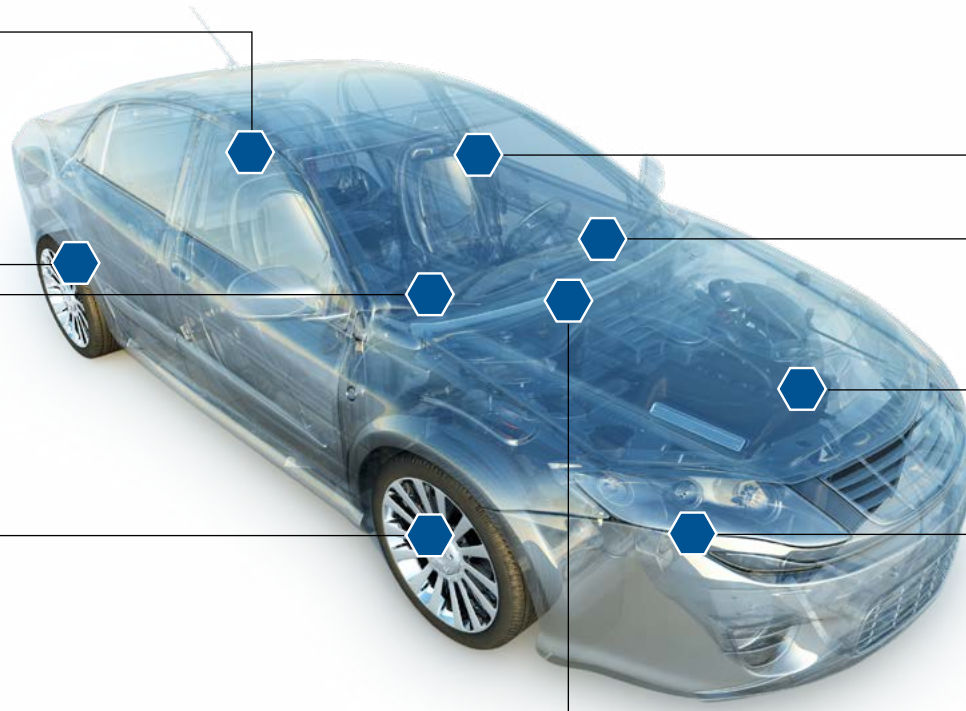
MOTORS/GEARBOXES

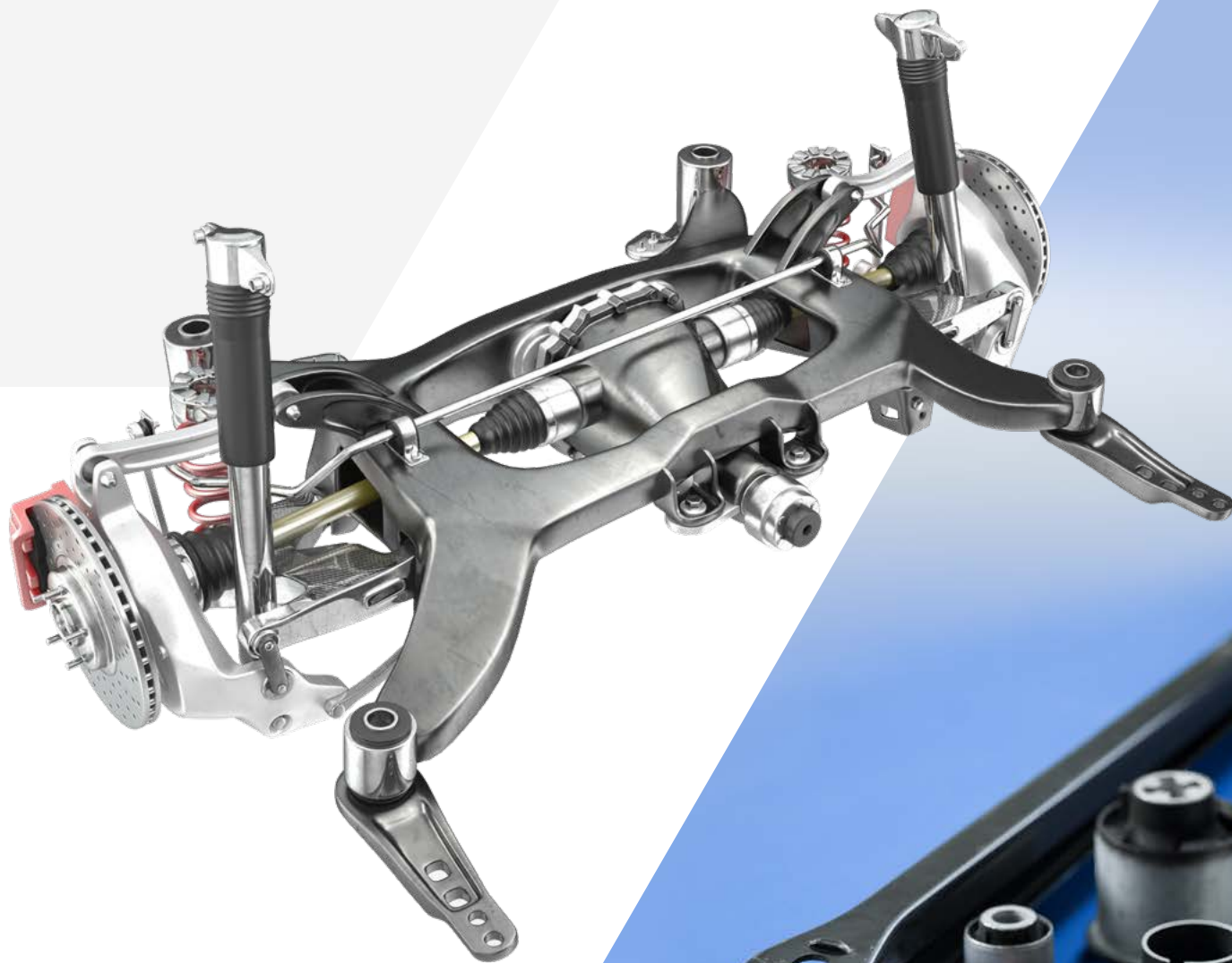
- torque rods
- gearbox mounts
- motor mounts
- torsional vibration dampers
- hydro aggregate mounts
- isolator pulleys

PLASTICS PARTS

- headlight covers
- LED-bezels

CABLE DUCTS





VALUE CHAIN

A photograph of three business professionals in a modern office setting. Two men and one woman are gathered around a table, engaged in a discussion. The man on the left is leaning forward, looking at a document. The man in the center is standing and leaning over the table, smiling. The woman on the right is seated, looking towards the man in the center. They are all wearing light blue shirts. The background shows large windows and a bright, airy office environment.

// PERFECT WORKFLOW
FOR REAL **ADDED VALUE**

Purchase of
blank parts

Delivery of
blank parts

**BU
METAL**

Delivery of
manufactured parts

**BU
PLASTICS**

Delivery of
manufactured parts

**BU
COATING**

Delivery of
manufactured parts

CUSTOMER

We focus on the requirements of our customers. And we think ahead: We want to offer added value that goes beyond the mere production of components and the service of coating. This starts with flexible workflows and customer-specific production methods and extends to many supplementary services in the areas of procurement, logistics, technology and finance.

// BUSINESS UNIT METAL

With the business unit metal, the GOTECH Group offers the procurement and production of metal products for further processing. The very large product range is oriented towards customer requirements. At GOTECH, all metal parts can be further processed in-house to support our customers in the production of rubber-metal parts. The GOTECH Group can rely on the long-standing know-how of its subsidiary STABITEC GmbH.



// PRODUCT EXAMPLES

PRODUCTION

- tube cutting
- profile cutting
- stamping
- CNC turning
- CNC milling
- assembling
- trovalisation

ENGINEERING

- tool engineering
- construction
- selection of production processes
- optimization of work procedures
- improvement of production quality

MATERIAL

- preselection
- procurement
- transportation
- quality control
- stock-keeping

LOGISTICS

- supporting optimization
- taking over stock-keeping
- taking over transportation
- just in time delivery
- building up safety stock
- worldwide connections

BU METAL



// BUSINESS UNIT PLASTICS

The GOTECH Group offers the procurement and production of high-quality injection molded products within the business unit plastics. Its products can be offered as finished products or used for further processing. With our know-how we can also provide support for the development of tools and molds, as well as for the selection of materials.



// PRODUCT EXAMPLES

TECHNOLOGY

- 1K / 2K / 3K injection moulding
- overmoulding of insert parts
- cable extrusion
- hotrunner & core pulling tools
- foaming of sealing
- thermoplastic foam casting (TFC)
- gas-assisted injection molding (GIT)
- tool engineering and manufacturing

SERVICES

- supporting in material and product development
- mold filling simulation
- component testing
- conditioning of finished parts
- assembling
- experience in processing high performance polymers (PEEK, PSU)

LABORATORY

- tactile 3D measurement technology
- 2D contactless scan
- dial gauges
- calliper gauges
- control gauges
- residual moisture measurement
- calibrated scales
- series accompanying measurements

LOGISTICS

- supporting optimization
- taking over stock-keeping
- taking over transportation
- just in time delivery
- building up safety stock
- worldwide connections

BU PLASTICS



// BUSINESS UNIT COATING

The GOTECH Group with its business unit coating is the worldwide specialist for surface finishing and application of bonding agents for rubber-metal/plastic parts. For this purpose we offer numerous standardized processes for surface treatment and application of bonding agents in our worldwide locations.

Components made of steel, aluminium, plastic, cast iron, round, angular, smooth, curved, solid, hollow, light or heavy: The GOTECH Group coats every part. Perfect, fast, reliable and on time. With the variety of different application processes of our machines and special plants, we fulfill all realizable customer wishes.

// PRODUCT EXAMPLES

BONDING AGENT COATING

- chain-on-edge coating
- hand coating
- round table coating
- roll coating
- flat bed spray coating
- dip coating
- dip & spin coating
- tumble spray coating
- wet electrostatic coating

PRE-TREATMENT

- corundum blasting
- grid blasting
- degreasing
- phosphating
- satinage
- etching
- ZnNi
- galvanic Zn

LABORATORY

- REM/EDX
- hardness testing
- X-Ray
- spark spectrometer
- stereo microscope
- spectrometer FTIR
- salt water spray test chamber
- climatic chamber
- grinding and polishing

LOGISTICS

- supporting optimization
- taking over stockkeeping
- taking over transportation
- building up safety stock
- connected worldwide



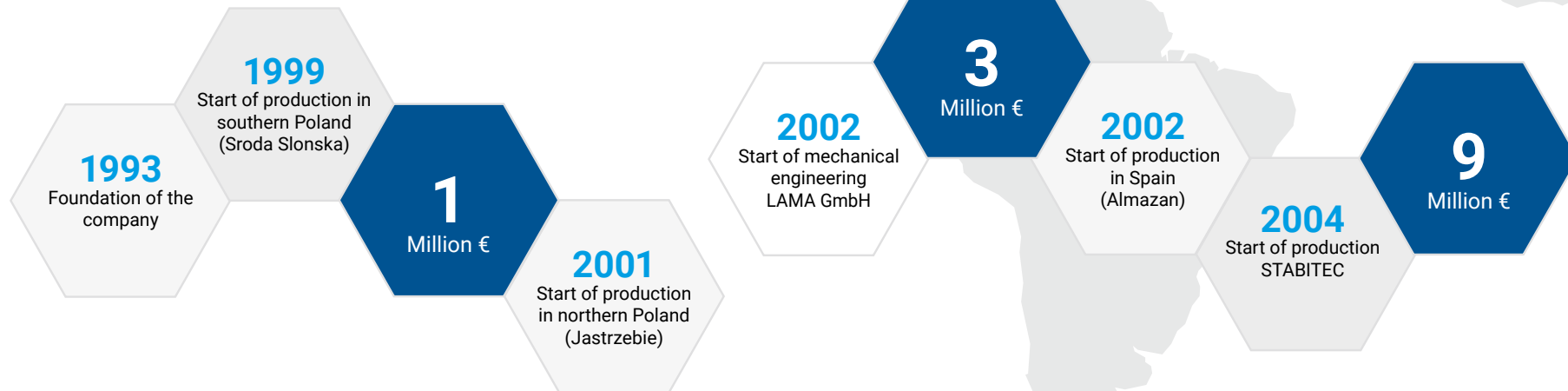
BU COATING



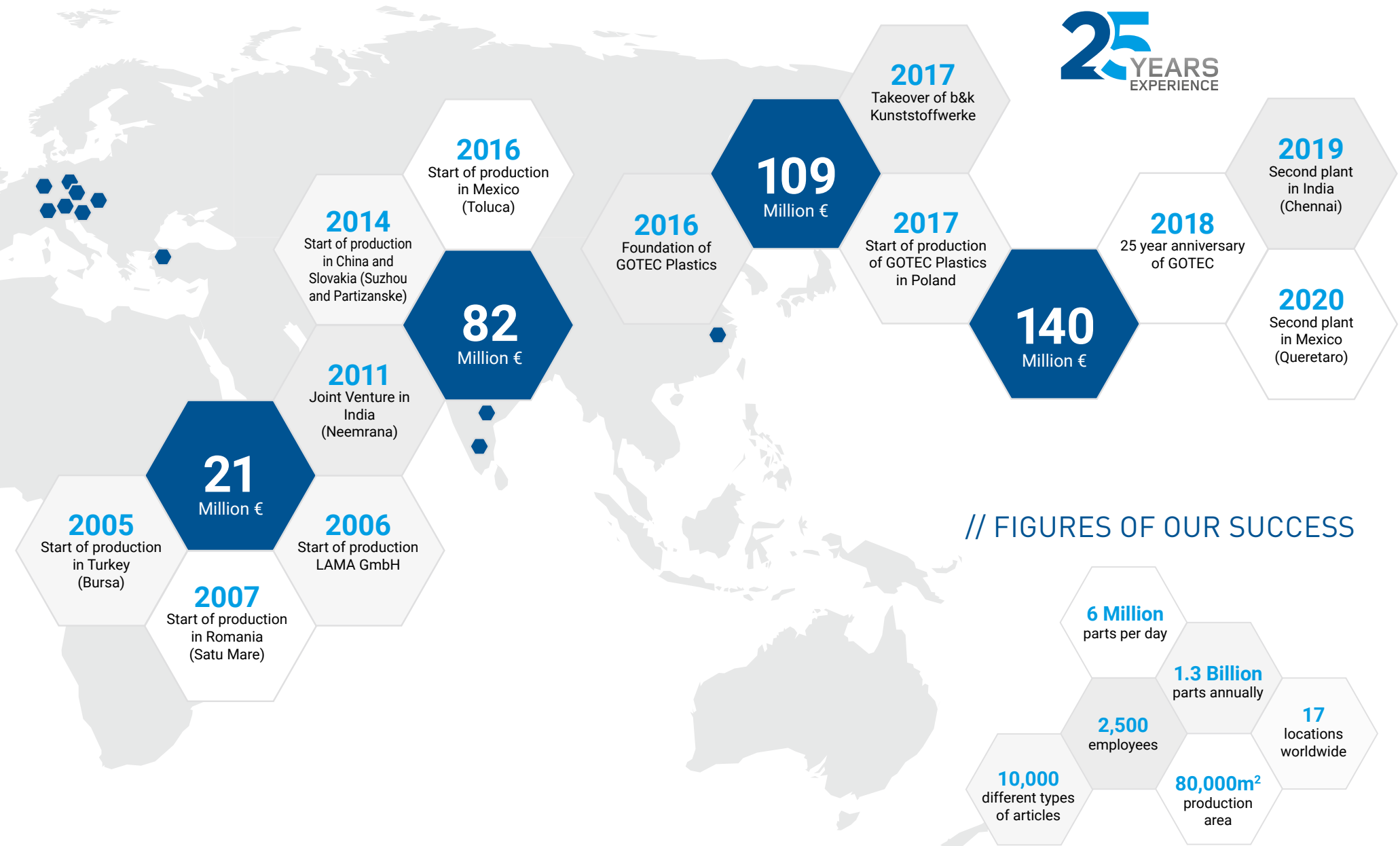
// 12 COUNTRIES – 17 LOCATIONS – 2.500 EMPLOYEES

As a strategic partner of the automotive industry, the GOTECH Group maintains locations on almost all continents. The company is headquartered in Wülfrath, Germany. Founded in 1993, the group employs more than 2500 people worldwide. The customers of the GOTECH Group include numerous well-known suppliers to the global automotive industry. Products and services of the GOTECH Group are found in vehicles of Mercedes, BMW, Porsche, Volkswagen, Audi, Toyota, Jeep, Ford and many more.

// OUR STORY OF SUCCESS



25
YEARS
EXPERIENCE



5 VALUES WORTH REMEMBERING

PERFORMANCE

PROXIMITY


RESPONSIBILITY

TRUSTWORTHINESS

CONTINUITY

We have defined "5 VALUES WORTH REMEMBERING" for the GOTECH Group. Compliance with these values paves the way for us to run the company successfully. Side by side with our customers, suppliers and employees, we can look forward to a promising future.

5 VALUES

A photograph of two men in a factory setting. The man on the left, of Asian descent, is wearing a light blue button-down shirt and dark jeans, and is holding a small, cylindrical metal part with both hands, showing it to the other man. The man on the right, of European descent, is wearing a light blue button-down shirt with a small 'GOTEC' logo on the chest, glasses, and dark trousers. They are both looking at the part with interest. The background is a blurred industrial environment with machinery and overhead lights. A blue diagonal banner is overlaid on the bottom right of the image, containing the text '// 5 VALUES WORTH REMEMBERING' in white.

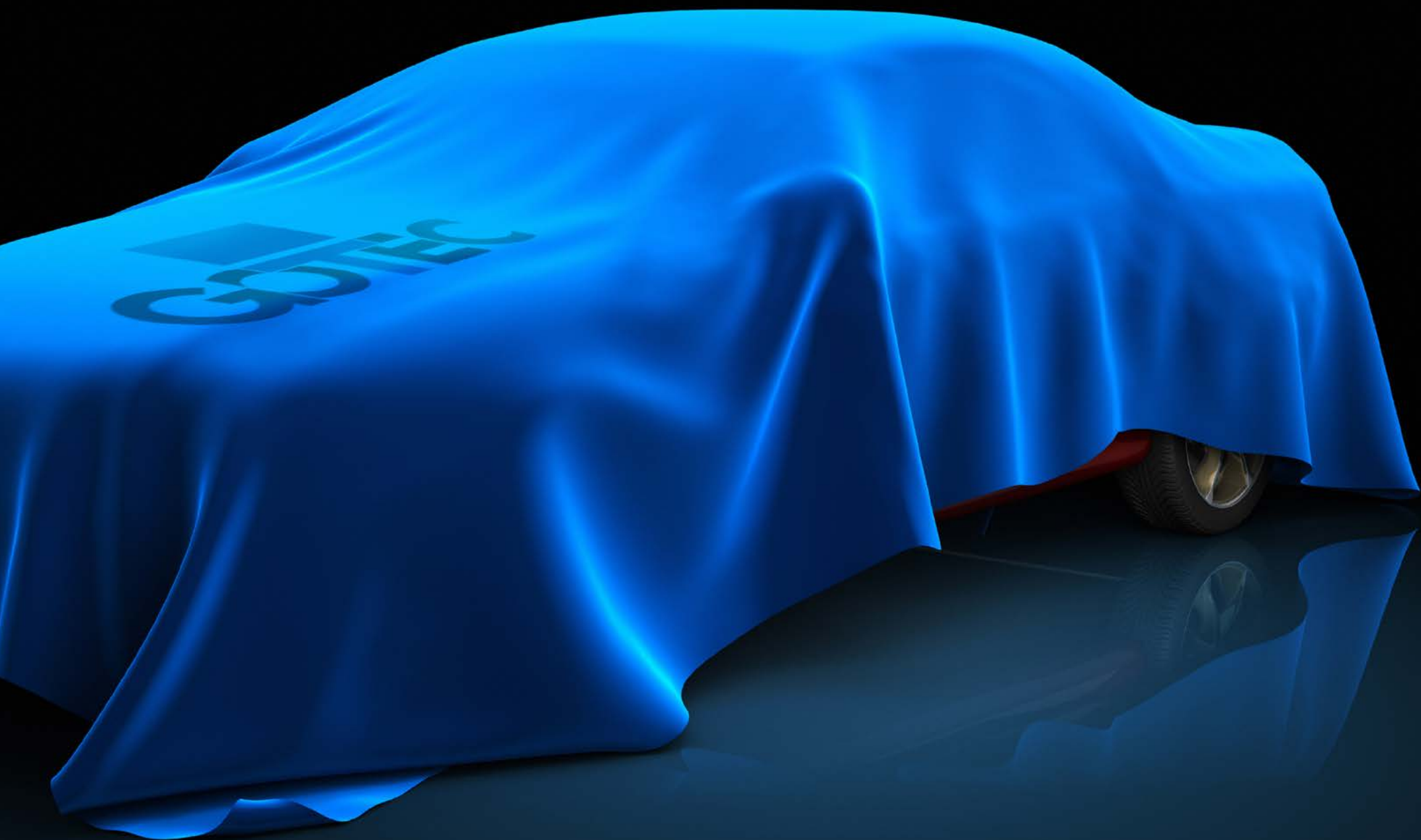
// **5 VALUES** WORTH
REMEMBERING

// OUR PRODUCTS AND SERVICES HAVE BEST **REFERENCES**

GOTECs products and services are built into virtually every car. Around 70 % of all cars produced worldwide benefit from our quality and reliability: 2 out of 3 cars contain GOTEC products and services. Whether this means conventionally powered, hybrid or electric vehicles, small cars, mid-range or premium luxury vehicles – almost all internationally renowned manufacturers rely on GOTECs quality.

Everyday millions of toughly operating cars prove our everlasting performance. The chances are very high that there are numerous GOTEC products and services in your car as well – to your complete satisfaction.

REFERENCES



// WE ARE VERY EXPERIENCED WHEN IT COMES TO PRESERVING THE ENVIRONMENT



The GOTECH Group aligns its production and work processes with strict environmental protection criteria. Consequently, the GOTECH Group has defined its environmental policy internally. Company decisions are examined from the point of view of environmental compatibility and production is designed to be as resource-saving as possible. The GOTECH Group uses regenerative energies, processes with low energy consumption and recyclable materials to protect the environment.



ENVIRONMENT & ENGAGEMENT

ENVIRONMENTAL CERTIFICATIONS
ENVIRONMENTAL POLICY

www.gotec-group.com

// OTHER THINGS DEAR TO US



Worldwide, the GOTEK Group is not only committed to the protection of the environment and nature, but also to numerous projects in the social sector and for the local population. These include direct help for employees, help in natural disasters and emergencies as well as support for non-profit organisations. Furthermore, the SAVE - Wildlife Conservation Fund was founded in 2010 by the GOTEK Group CEO Lars Gorschlüter. This foundation is committed to nature and species conservation and is supported by the GOTEK Group, many other companies and private sponsors.



www.save-wildlife.org



GOTEC Gorschlüter GmbH
Dieselstraße 70 • 42489 Wülfrath • Germany
T +49 2058 7882-0 F +49 2058 7882-22
info@gotec-group.com • gotec-group.com

